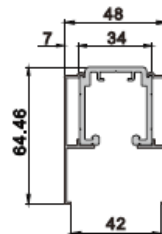
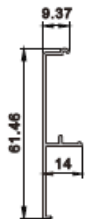
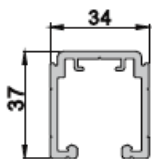


MOD.600080 80 Kgs

MANUAL INSTALACION JUEGOS HERRAJE CORREDERA



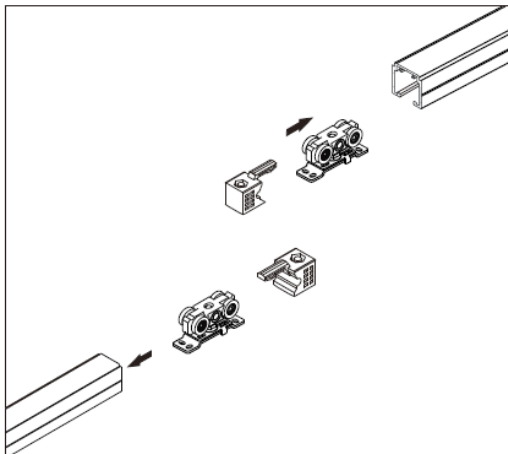
EN WOOD SLIDING DOOR INSTALLATION MANUAL
FR MANUEL D'INSTALLATION DE PORTE COULISSANTE DEN BOIS
PT MANUAL DE INSTALAÇÃO DE PORTA DE CORRER EM MADEIRA



Pasos / Steps / Mesures / Passos

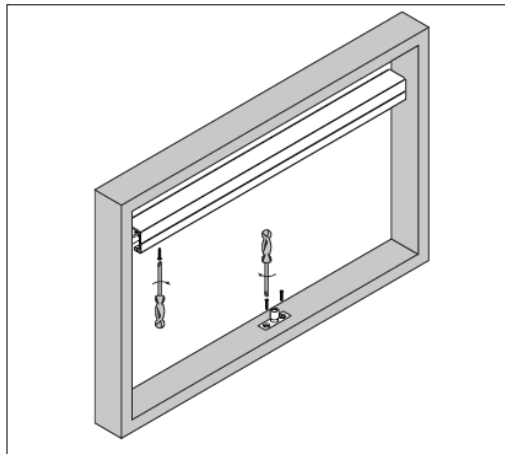
1 Colocar el carro y el tope en la guía

EN Put the upper wheel and damping stopper into the rail
FR Placez la roue supérieure et la butée d'amortissement dans la rail
PT Coloque a roda superior e o batente de amortecimento no carril



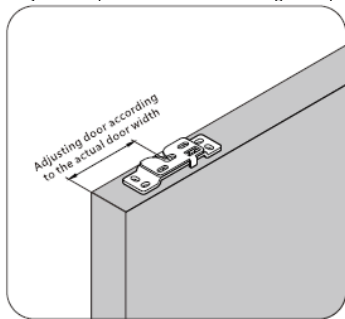
2 Fijar la guía superior y el guiador de suelo

EN Fix the upper rail and floor guide
FR Fixer le rail supérieur et le guide au sol
PT Fixe o carril superior e a guia de piso



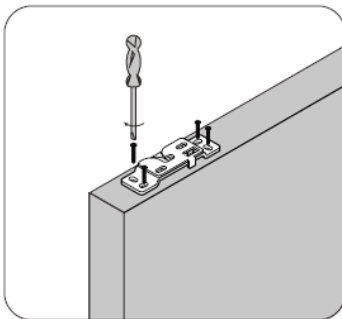
3 Ajustar el soporte de acuerdo a la anchura de la puerta

EN Adjust the bracket according door width
FR Ajustez le support en fonction de la largeur de la porte
PT Ajuste o suporte de acordó com a largura da porte



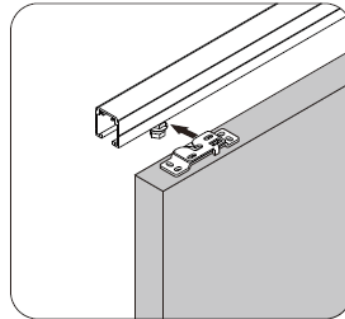
4 Instalar el soporte

EN Install the bracket
FR Installer le support
PT Instale o suporte



5 Colgar la puerta

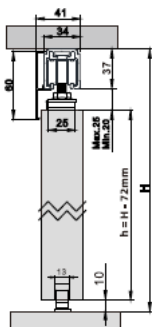
EN Hang the door on
FR Accrocher la porte
PT Pendura a porta



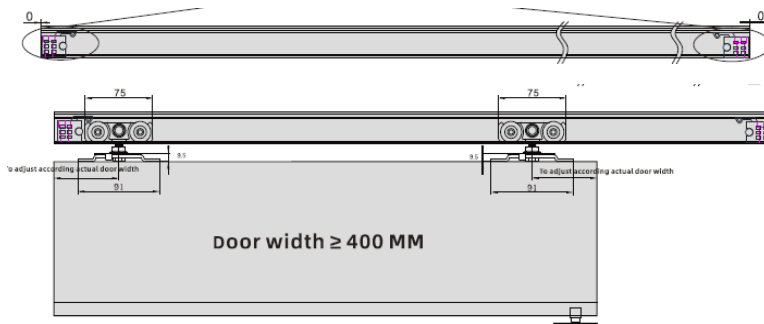
Parámetros de instalación

EN Installation parameter
FR Paramètre d'installation
PT Parâmetro de instalação

Altura de la puerta (h) = Hueco de puerta (H) - 72mm
Door Height (h) = Door gap (H) - 72mm
Hauteur de la porte (h) = Espace de porte - 72mm
Altura da porta (h) = Abertura da porta (H) - 72mm



Topes / Stoppers / butées / Batentes



Anchura de la puerta ≥ 400 MM
Largeur de la porte ≥ 400 MM
Largura da porte ≥ 400 MM